

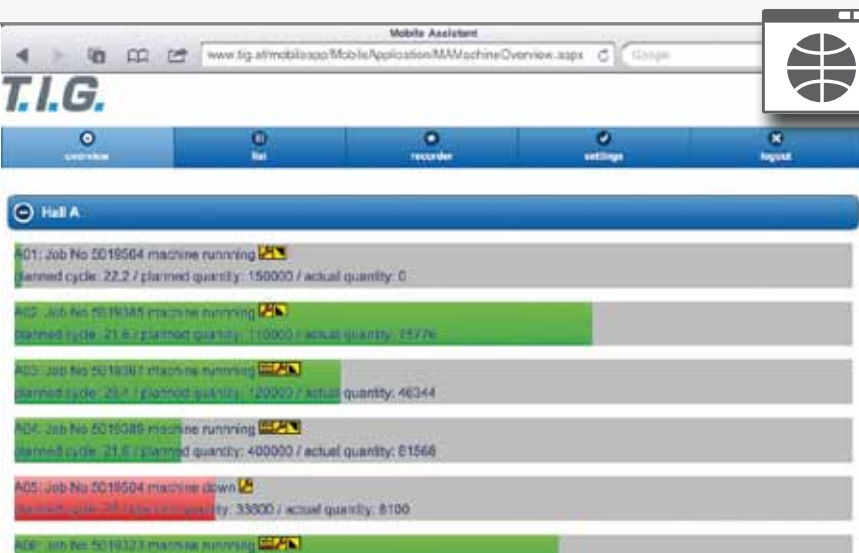
Energy | energy optimization guaranteed

- Energy from fossil fuels will not be available forever | make the energy consumption visible
 - Peak-load energy is expensive | reduce energy costs by means of energy-optimized planning
 - Optimize the energy consumption of machines | controlled starting and warming-up processes
 - Start signal for „Green Production“ | production with state-of-the-art technology - strengthen your image
- Save energy in production**



Analyzer | making decisions at the push of a button guaranteed

- Cockpit for OEE, KPI | for shift, day, month, year
 - Help with decision-making for investments | key data can be compared
 - Stay abreast of globalization | comparison of factories (OEE, KPI)
 - Inter-divisional key data | access to several data sources
- Versatile and fast for informative reports and analyses**



Mobile | mobile information guaranteed

- Online summary of the production(s) on smartphones, Tablet, Internet-Browser
 - Essential key data such as productivity, cycle time, reject rate or degree of efficiency
 - Access to production data can be granted to any number of smartphones
 - Executable and configurable on any new generation smartphones and Tablets
- Production on your smart phone**

T.I.G.

Rankweil | Vienna | Hongkong | Shenzhen | Shanghai

Technische Informationssysteme GmbH
6830 Rankweil, Austria, Lehenweg 2
T +43 / 5522 / 41693-0, F +43 / 5522 / 41693-15
office@tig.at

T.I.G. branch office Vienna, Austria
Hofzeile 24, 1190 Wien
T +43 / 5522 / 41693-0, F +43 / 5522 / 41693-15
office@tig.at

T.I.G. Hong Kong Limited, China
Suite 2305A, World Wide house
19 Des Voeux Road Central
T +852 / 2916 88 88, F +852 / 2916 88 00
office.hongkong@tig.at

T.I.G. Shenzhen, China
2nd floor, Block 3, Sanwei Industry Park
Baoan Avenue, Xisiang, Baoan district
CN-518102 Shenzhen, Guangdong
T +86 / 75529034254, F +86 / 75527367764
office.china@tig.at

T.I.G Shanghai, China
No. 1199, Luo Fen Road, Building 63, Unit 202
CN-201908 Shanghai, Baoshan District
T +86 / 1862193 05 57
office.china@tig.at



www.tig.at



www.authentig.com

authentig

efficiency guaranteed



- Monitoring | productivity guaranteed
- Planning | concise planning guaranteed
- Optimizer | optimal planning results guaranteed
- Quality | quality production guaranteed
- Setup | correct machine settings guaranteed
- Connector | data from the machines guaranteed
- Production-Monitor | transparency guaranteed
- Energy | energy optimization guaranteed
- Analyzer | making decisions at the push of a button guaranteed
- Mobile | mobile information guaranteed

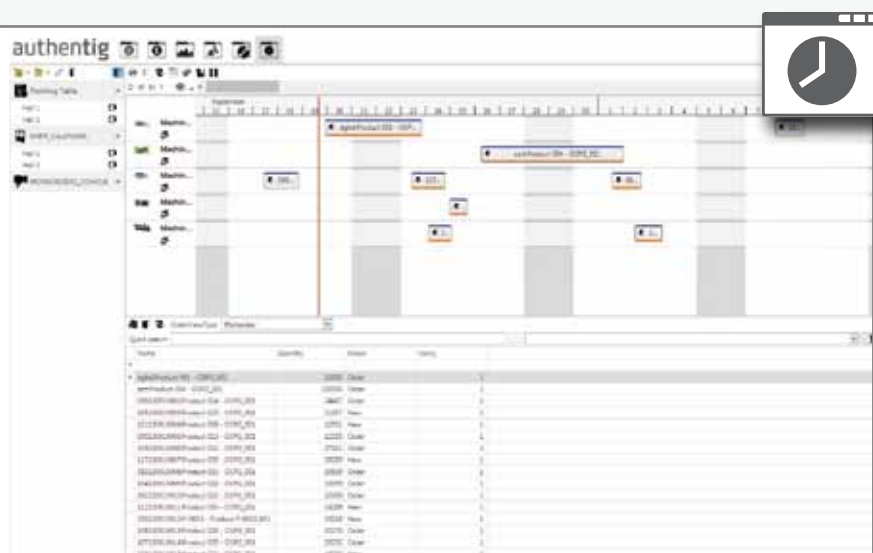
Determination is the way to SUCCESS



Monitoring | productivity guaranteed

- Increase profit | reduce waste and machine downtimes
- Make decisions at the push of a button | Always generate up-to-date OEE and KPI
- Optimize production processes | Eliminate weaknesses in the production
- Reduce energy costs | visualize the energy consumption of machines

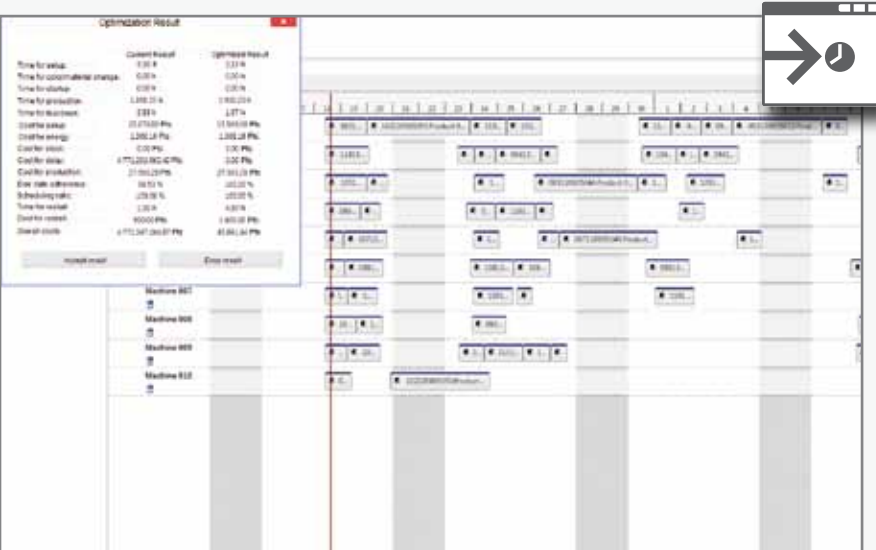
High-performance industrial and production data acquisition for any machines in series production



Planning | concise planning guaranteed

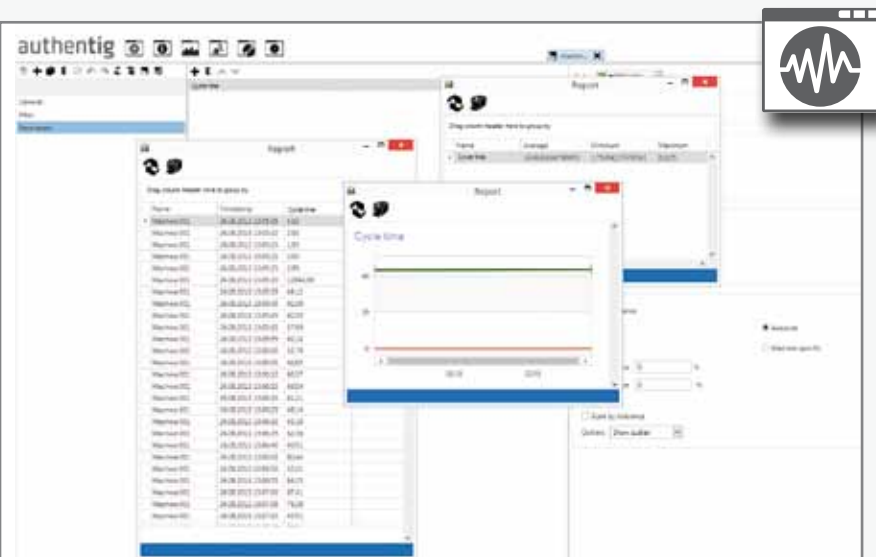
- The multi-level planning grid | scheduling of interrelated work processes
- Standard interface to ERP | Order and master data, alarm and process data
- Customers order within short periods | fast planning results at the push of a button
- Personnel shortage | visualize personnel demand, promptly identify shortages

Fully graphic, multi-stage production planning system



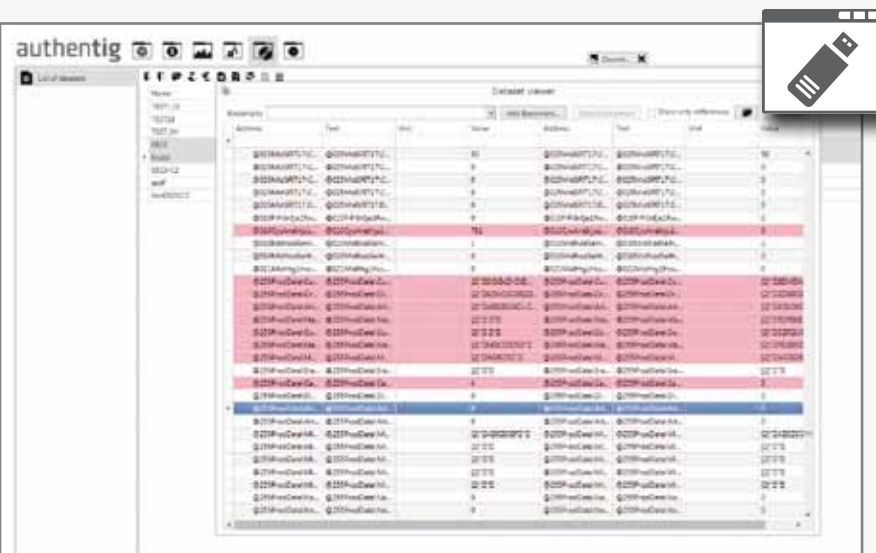
Optimizer | optimal planning results guaranteed

- Resource shortages | optimization according to personnel deployment groups
 - Energy as a cost factor | optimization according to energy consumption
 - Colour change and set-up times | optimization according to material and colour sequence
 - Customer deadlines have top priority | optimization according to delivery deadlines
- Achieve optimal planning results that can be compared using key statistics**



Quality | quality production guaranteed

- Product liability | complete documentation of data for processes and parts
 - Analyse waste | critical analysis of process and part
 - Prevent waste | identification of trends, early optimization of processes
 - Increase productivity | continuous improvement process (KVP)
- Uninterrupted recording and documentation of quality for parts characteristic and process**



Setup | correct machine settings guaranteed

- Saving settings data records | save valuable knowledge
 - No limits | store and archive any number of settings data records
 - Clarity creates confidence | quick access to appropriate settings data
 - Comparison between old and current version | differences are highlighted
- Visualise and archive settings data**



Connector | data from the machines guaranteed

- Non-homogeneous machinery | interconnect by means of host computer interface or parallel electronics
- Modern modular system | modular, gradual development of the machine connection
- The language of production | standardized dialogues for recall of orders and entry of downtimes
- Uninterruptible and reliable | basis for key data such as OEE and KPI

Each machine is suitably networked

TIG Hall 1 12.3.2013

Mould	K-39272-W	K-46511-W	K-37220-W	G-20714-W	G-20751.01-W	G-
Set	2600	1479	1500	4224	3600	2520
Actual	451	1884	376	5794	2538	58101
Scrap	0	41	11	12	0	0
Scrap Rate	0.00	2.13	2.84	0.21	0.00	0.00
Efficiency	89.16	95.85	91.24	86.36	96.45	92.37
Cycle set	29.00	29.00	37.00	31.00	39.00	70.00
Cycle actual	29.81	26.61	42.67	47.29	38.48	77.88
	S 080-1	S 080-2	S 080-3	S 180-1	S 350-1	S 650-1
	▶	▶	⚠	■	◻	✘

Production-Monitor | transparency guaranteed

- Focus on the production | operating figures for employees
 - Production as an image factor | modern, large displays with OEE and KPI
 - Information about the status of production | order progress and productivity
 - Courage to create transparency | everyone knows about the quality of your work, including the customers
- Direct access to production | production at a glance

We are independent, support innovation and want to understand the big picture