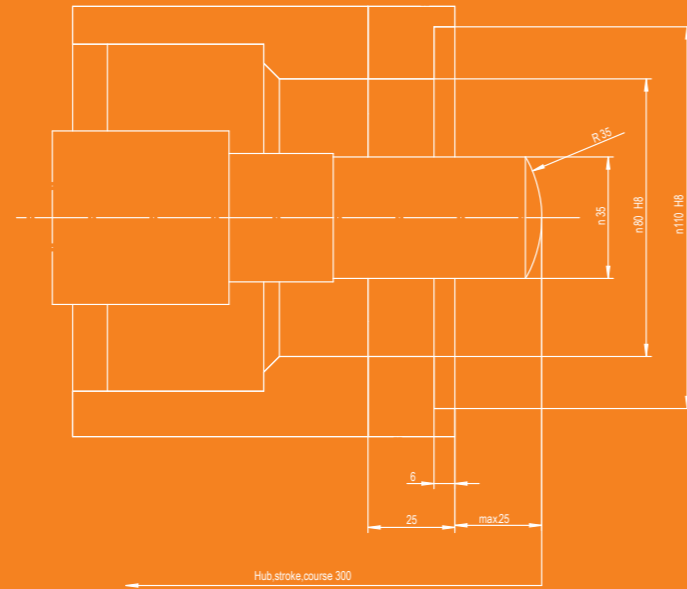


**Standard equipment**

- Microprocessor-control PC50touch
- Energy saving MAPLAN Cool Drive – system
- Linear positioning system for clamp and injection unit, ejector injection and clamp side
- Clamp plates with EUROMAP
- 4 cooling circuits (3 user-specific adaptable)
- 2-hand operation
- Electric backpressure
- Full-controlled injection process
- Compact design
- Hydraulic retractable injection unit
- Constant L/D ratio
- Hydraulic direct driven screw



Nozzle situation

**Options**

- Hydraulic ejector injection and/or clamp side
- Central ejector clamp side
- Pneumatically operated safety gate
- Vacuum pump
- Electric oil temperature monitoring
- Electric oil level monitoring
- Electric oil filter monitoring
- Customer-specific machine nozzles
- Shut-off-nozzle
- Material feeding systems

Other options on request

All models are also available with FIFO rubber injection unit

Machine type		MTF80P/27C	MTF80P/40C	MTTF80P/40C				
Clamping unit								
Opening stroke	mm	395	395	390				
Daylight	mm	443	443	550				
Clamping force	kN	266	401	392				
Min. mould height	mm	48	48	160				
Mould mounting plates (w x d)	mm	380 x 300	380 x 300	500 x 400				
Injection unit								
Injection volume standard	cm <sup>3</sup>	88,4						
injection pressure	bar	1540						
Injection volume alternative <sup>1)</sup>	cm <sup>3</sup>	28	41,8	61,4	106	144	106	144
injection pressure	bar	3000	2864	2218	2042	1500	2042	1500
Machine weight approx.	kg	1450		1600		4100		
Floor space required	m <sup>2</sup>	1,3		1,3		2		

<sup>1)</sup> Further injection unit volumes on request

© MAPLAN 09/2012 | We reserve the right to technical modifications.



rubber injection technology



## MTF/MTTF vertical C-frame TPE

### TPE injection unit

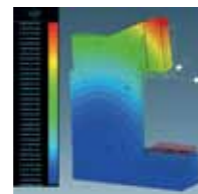
The TPE technology for cost-effective production of thermoplastic elastomer parts. Technological leadership, ease of operation and maintenance, highest precision, compact design.

### MAPLAN injection moulding machines for processing thermo-plastic elastomers (TPE).

The compact design ensures the highest degree of precision, reproducibility and ease of maintenance. The proven injection unit concept features integrated hydraulics and hydraulic direct drive of the screw.



**Product range**  
Production of moulded parts from TPE (ThermoPlastic Elastomers) at injection volumes up to 144 cm<sup>3</sup>.



**Technology**  
Most modern FEM calculations helped optimise the machine's base frame to achieve max. rigidity and thus minimum bending. The symmetrical arrangement of the nozzle carriage cylinders guarantees torque-free nozzle contact with the mould.



**Process technology**  
Superior melt homogeneity due to constant L/D ratio of 22:1 and high injection pressures up to 3000 bar.



**Control technology**  
The PC50touch control with intuitive touch screen interface opens up new dimensions in optimization of the injection moulding process.

